



# integrated class location analyst



class location. simplified.

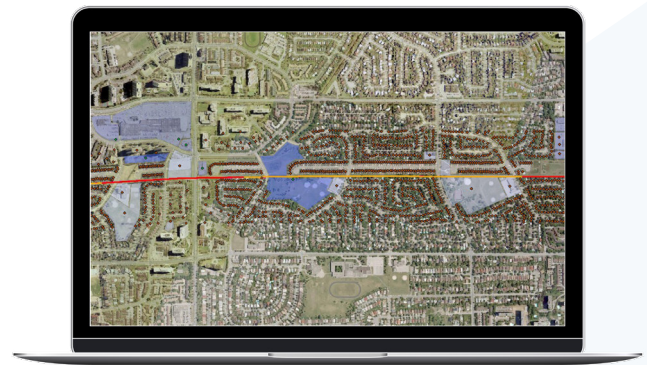
## Class Location Analysis Benefits

Class location analysis is a regulatory-driven process that ensures adequate levels of **Pipeline Integrity** and **Public Safety**. Results acquired as a part of this analysis are used as a factor in determining the pipe grade during pipeline design as well as throughout the pipeline lifecycle as part of ongoing operation and maintenance of the network.

The classes relied upon for this analysis are tightly coupled to **population density**, derived from the structures and gathering areas that surround the pipeline infrastructure. This in itself is a necessary component for better determining an organization's Public Safety planning needs.

## Regulation Compliance

The **INTEGRATED CLASS LOCATION ANALYST** is designed to enable pipeline operators to automate analysis workflows using both the CAN / CSA Z662-03 and 40 CFR Part 192+ regulations. This **Add-In for ArcGIS** works in conjunction with your company's Geographic Information System (GIS) and PODS / APDM databases to streamline the process for efficiently and effectively meeting regulatory requirements.



## Cost Reduction

Implementation of the **INTEGRATED CLASS LOCATION ANALYST** aides businesses in not just better securing Pipeline Integrity and Public Safety support - but also leads to **reduced data acquisition costs** and more **streamlined workflows**. It has also proven to provide extensive cost savings through resource and time reduction.

## let us help

If your team is ready to implement the **INTEGRATED CLASS LOCATION ANALYST** application in your own workflow, contact us to discuss a demonstration, trial, and enterprise licensing.

Questions? Learn more by contacting Integrated Informatics Inc at [gis@integrated-informatics.com](mailto:gis@integrated-informatics.com).



**integrated informatics inc**  
process & technology. simplified.

[www.integrated-informatics.com](http://www.integrated-informatics.com) | [gis@integrated-informatics.com](mailto:gis@integrated-informatics.com)